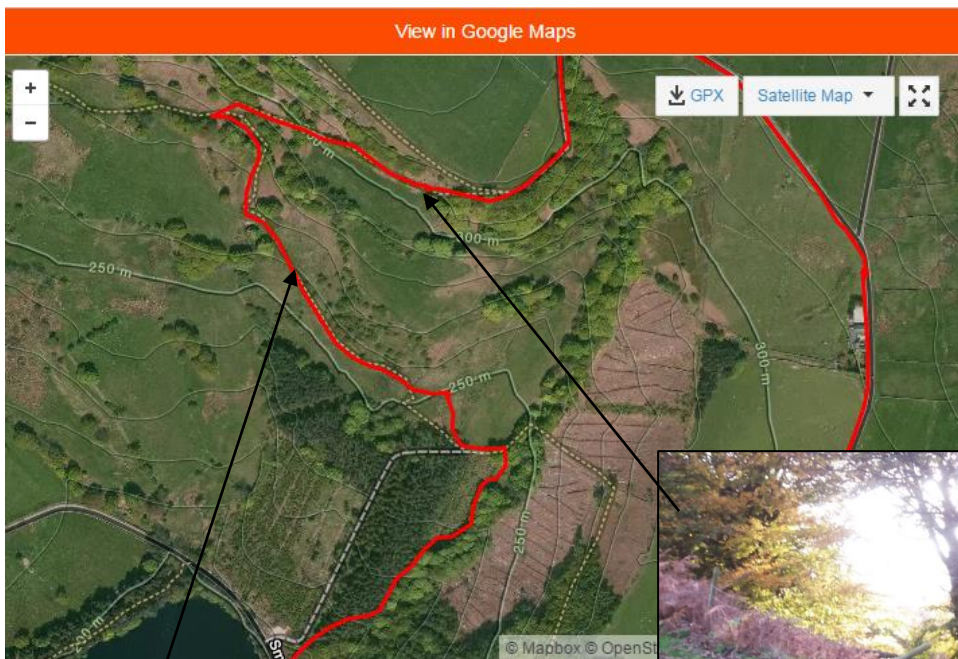




Detail from your route last week.

I came from a different (road) direction today, so joined your Sunday route here.



Detail from my route today

The path I took down was signposted and on the OS map. It does actually join up with yours at the ladder style that goes into the woods, so I don't think it matters too much.



I took this photo with the little stone bench behind me looking towards Agden. There is a grassy path going downwards between stone walls, but to get onto it, you need to go over the fence (as in the photo). Is this the top of your zigzag path down?